



Myosin XVI Polyclonal Antibody

| | |
|---------------------------|---|
| Catalog No | YP-Ab-03167 |
| Isotype | IgG |
| Reactivity | Human;Rat;Mouse; |
| Applications | WB;ELISA;IHC |
| Gene Name | MYO16 |
| Protein Name | Unconventional myosin-XVI |
| Immunogen | Synthesized peptide derived from Myosin XVI . at AA range: 1050-1130 |
| Specificity | Myosin XVI Polyclonal Antibody detects endogenous levels of Myosin XVI protein. |
| Formulation | Liquid in PBS containing 50% glycerol, 0.5% BSA and 0.02% sodium azide. |
| Source | Polyclonal, Rabbit,IgG |
| Purification | The antibody was affinity-purified from rabbit antiserum by affinity-chromatography using epitope-specific immunogen. |
| Dilution | WB 1:500-2000;IHC-p 1:50-300; ELISA 2000-20000 |
| Concentration | 1 mg/ml |
| Purity | ≥90% |
| Storage Stability | -20°C/1 year |
| Synonyms | MYO16; KIAA0865; MYO16B; NYAP3; Unconventional myosin-XVI; Neuronal tyrosine-phosphorylated phosphoinositide-3-kinase adapter 3; Unconventional myosin-16 |
| Observed Band | 200kD |
| Cell Pathway | Cytoplasm . Found in puncta in soma and processes of astrocytes and dissociated cerebellar cells with the morphology of migrating granule cells. . |
| Tissue Specificity | Amygdala,Brain, |
| Function | function:Myosins are actin-based motor molecules with ATPase activity. Unconventional myosins serve in intracellular movements. Their highly divergent tails are presumed to bind to membranous compartments, which would be moved relative to actin filaments. May be involved in targeting of the catalytic subunit of protein phosphatase 1 during brain development.,similarity:Contains 1 IQ domain.,similarity:Contains 2 myosin head-like domains.,similarity:Contains 7 ANK repeats.,subcellular location:Found in puncta in soma and processes of astrocytes and dissociated cerebellar cells with the morphology of migrating granule cells.,subunit:Binds PPP1CA and/or PPP1CC. Binds F-actin in an ATP-sensitive manner., |
| Background | function:Myosins are actin-based motor molecules with ATPase activity. Unconventional myosins serve in intracellular movements. Their highly divergent tails are presumed to bind to membranous compartments, which would be moved |



relative to actin filaments. May be involved in targeting of the catalytic subunit of protein phosphatase 1 during brain development.,similarity:Contains 1 IQ domain.,similarity:Contains 2 myosin head-like domains.,similarity:Contains 7 ANK repeats.,subcellular location:Found in puncta in soma and processes of astrocytes and dissociated cerebellar cells with the morphology of migrating granule cells.,subunit:Binds PPP1CA and/or PPP1CC. Binds F-actin in an ATP-sensitive manner.,

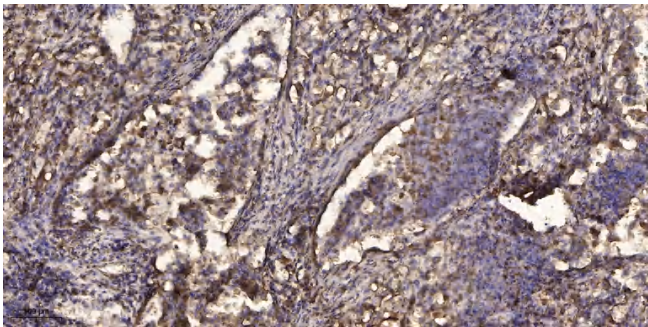
matters needing attention

Avoid repeated freezing and thawing!

Usage suggestions

This product can be used in immunological reaction related experiments. For more information, please consult technical personnel.

Products Images



Immunohistochemical analysis of paraffin-embedded human Squamous cell carcinoma of lung. 1, Antibody was diluted at 1:200(4° overnight). 2, Tris-EDTA,pH9.0 was used for antigen retrieval. 3,Secondary antibody was diluted at 1:200(room temperature, 45min).